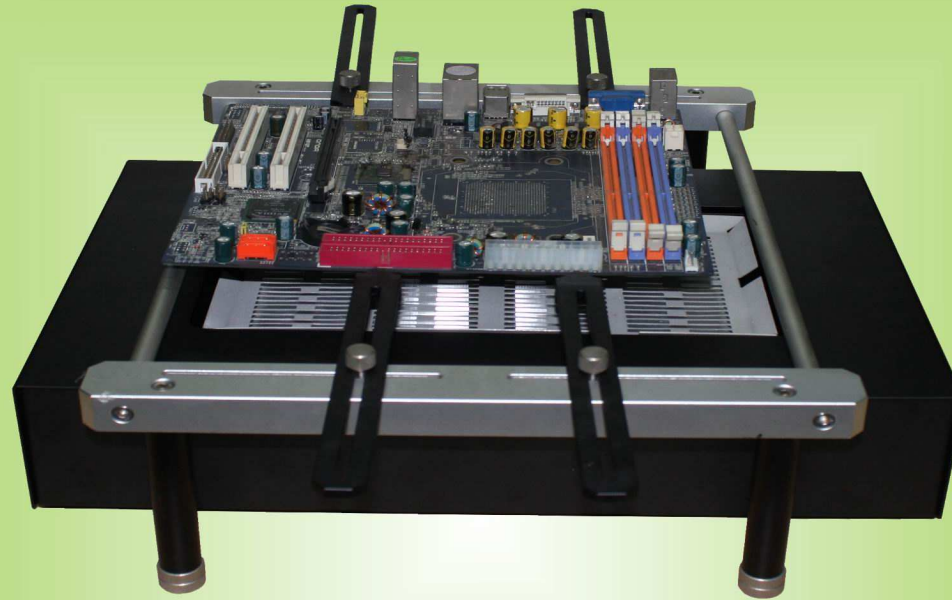
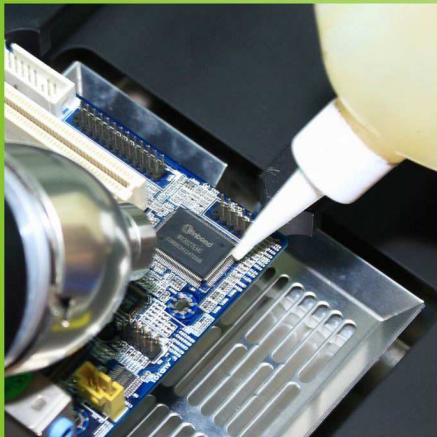


IR860-II SMD/BGA REWORK STATION



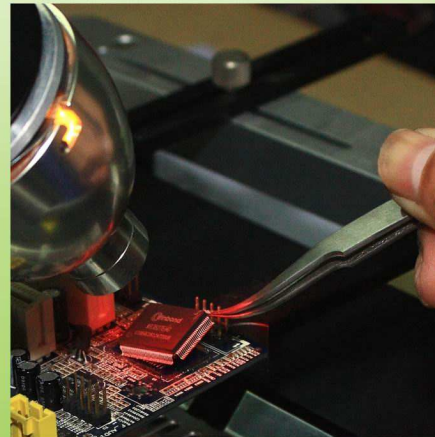
Presentation Graphics :



Apply flux and preheat PCB



Heat component with IR handtool



Remove component



SPECIFICATION :

Input power	100-120Vac 60Hz; 220-240Vac 50Hz	
SOLDER LIGHT	Wattage	15Vac, 150W
	Temperature range	45-350°C 113-662°F
	TIMER	0~900s
PREHEAT	Wattage	1600W
	Temperature range	100-350°C 212-662°F